

~ JOURNEY'S END ~

Six-Part Block of the Month Program Featuring  
Katie's Cupboard Collection

For ordering purposes, yardages for one complete quilt (including binding) are itemized below and have been rounded up to the nearest 1/8 yard increment for cutting needs. Backing requirement is not included.

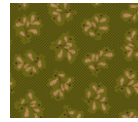
To simplify the process of pricing of this club for your customers, actual pre-cuts and yardage amounts used per quilt are itemized below. Pre-cut sizes are as follows:

Fat Quarters – 18" x 21" ♦ Fat Eighths – 9" x 21" ♦ Chubby Sixteenths – 9" x 10 1/2"



**6670-33 ♦ 1/4 yd**

♦ 1 fat eighth; 1 chubby sixteenth; 1 square, 6" x 6"



**6672-66 ♦ 1/2 yd**

♦ 2 fat eighths; 1 chubby sixteenth; 2 squares, 6" x 6"



**6670-88 ♦ 1/2 yd**

♦ 1 fat eighth; 5 chubby sixteenths



**6672-88 ♦ 1/2 yd**

♦ 1 fat eighth; 3 chubby sixteenths



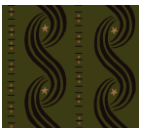
**6670-99 ♦ 1/2 yd**

♦ 2 fat eighths; 1 chubby sixteenth; 2 squares, 6" x 6"



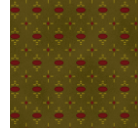
**6673-30 ♦ 1/2 yd**

♦ 1 fat eighth; 5 chubby sixteenths



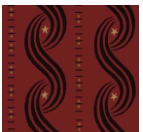
**6671-66 ♦ 1/4 yd**

♦ 1 fat eighth; 1 chubby sixteenth



**6673-66 ♦ 1/4 yd**

♦ 1 fat eighth; 1 chubby sixteenth, 1 square, 6" x 6"



**6671-88 ♦ 1/2 yd**

♦ 1 fat eighth; 2 chubby sixteenths; 1 square, 6" x 6"



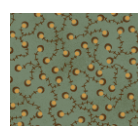
**6673-88 ♦ 5/8 yd**

♦ 1 cut, 3/8 yd; 3 chubby sixteenths; 1 square, 6" x 6"



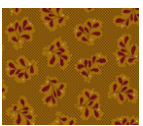
**6671-99 ♦ 2 yds**

♦ 1 cut, 1 3/4 yds; 1 square, 6" x 6"



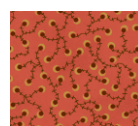
**6674-11 ♦ 1/2 yd**

♦ 1 fat eighth; 3 chubby sixteenths; 1 square, 6" x 6"



**6672-44 ♦ 1/2 yd**

♦ 1 fat eighth; 2 chubby sixteenths; 3 squares, 6" x 6"



**6674-22 ♦ 1/2 yd**

♦ 2 fat eighths; 3 chubby sixteenths; 1 square, 6" x 6"



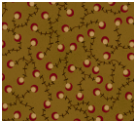
**6674-40** ♦ 7/8 yd

♦ 1 cut, 1/3 yd; 2 fat eighths; 2 chubby sixteenths



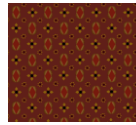
**6677-66** ♦ 1/2 yd

♦ 2 fat eighths; 2 chubby sixteenths; 1 square, 6" x 6"



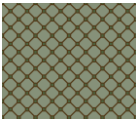
**6674-44** ♦ 1/2 yd

♦ 1 fat eighth; 3 chubby sixteenths; 1 square, 6" x 6"



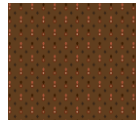
**6677-88** ♦ 1/2 yd

♦ 1 fat eighth; 2 chubby sixteenths; 1 square, 6" x 6"



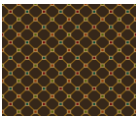
**6675-11** ♦ 1/2 yd

♦ 2 fat eighths; 3 chubby sixteenths



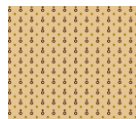
**6678-33** ♦ 1/4 yd

♦ 1 fat eighth; 2 chubby sixteenths



**6675-33** ♦ 1/2 yd

♦ 1 fat eighth; 2 chubby sixteenths; 3 squares, 6" x 6"



**6678-40** ♦ 3/4 yd

♦ 2 fat quarters; 1 fat eighth; 1 chubby sixteenth



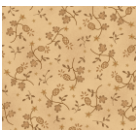
**6675-40** ♦ 3/4 yd

♦ 1 fat quarter; 1 fat eighth; 2 chubby sixteenths



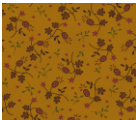
**6678-77** ♦ 1/2 yd

♦ 1 fat eighth; 3 chubby sixteenths



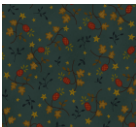
**6676-40** ♦ 1/2 yd

♦ 2 fat eighths; 4 chubby sixteenths



**6676-44** ♦ 1/2 yd

♦ 1 fat eighth; 3 chubby sixteenths; 1 square, 6" x 6"



**6676-77** ♦ 1/2 yd

♦ 1 fat eighth; 4 chubby sixteenths; 1 square, 6" x 6"



**6677-33** ♦ 1/2 yd

♦ 1 fat eighth; 2 chubby sixteenths; 2 squares, 6" x 6"