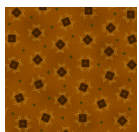


SIMPLE WHATNOTS CLUB ~ COLLECTION 4

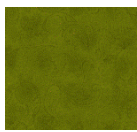
Sunday Best Ordering Summary for One Complete Pattern Collection

Yardage amounts include quilt tops and binding and have been rounded up to the next 1/8 yard measurement for cutting needs. Backing requirements are not included.

For calculating purposes it's assumed that either the patchwork *or* appliqué version of "On the Fence" will be made by any given club participant, not both projects; yardage amounts provided below will enable either version to be made.



6508-30 – 1/2 yd



6511-66 – 1/2 yd



6514-44 – 1 yd



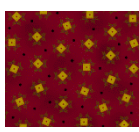
6508-77 – 1/2 yd



6511-88 – 1/2 yd



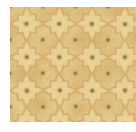
6514-55 – 1/2 yd



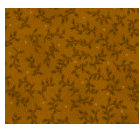
6508-88 – 1/2 yd



6512-33 – 3/4 yd



6515-44 – 1 yd



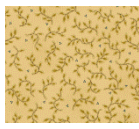
6509-30 – 1/2 yd



6512-77 – 3/4 yd



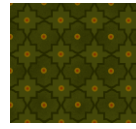
6515-55 – 1/2 yd



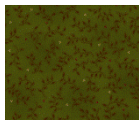
6509-44 – 1 yd



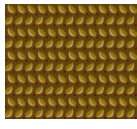
6512-88 – 1/2 yd



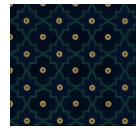
6515-66 – 1/2 yd



6509-66 – 1/2 yd



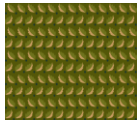
6513-33 – 1/2 yd



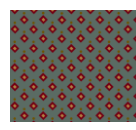
6515-77 – 3/4 yd



6510-33 – 3/4 yd



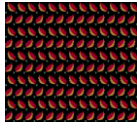
6513-66 – 1/2 yd



6516-11 – 1/2 yd



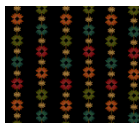
6510-88 – 1/2 yd



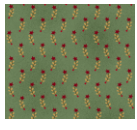
6513-99 – 1/2 yd



6516-40 – 1/2 yd



6510-99 – 3/4 yd



6514-11 – 1 yd



6516-88 – 1/2 yd



6511-44 – 1 1/4 yds



6514-40 – 1/2 yd